

Congratulations on your purchase of the LEDV56-T-TS LIGHT KIT!

The LEDV56-T-TS Light Kit will work on any motorcycle fitted with a top-mounted GIVI V56 case. The kit is easy to install and significantly enhances your visibility on the road and the good looks of your V56 case. Each kit contains two high intensity LED arrays that fit perfectly behind the original lenses of the GIVI case. The Power Harness with the embedded controller fits neatly under your motorcycle seat or behind the tail light assembly. The controller allows you to connect the light kit to your bike's tail light, brake light, and turn signals. Your case lights will always be on when riding, the lights will brighten when you apply your brakes and the lights will flash (amber) with your turn signals.

To check for possible updates to this instruction set, please visit:

<http://www.admorelighting.com/docs/ADML-LEDV56TTS.pdf>

(Please note: Link address is case sensitive and must be typed exactly as shown).



Please note: We make no guarantee that the LEDV56-T-TS Light Kit is legal for street use in your area. You should never rely on your LEDV56-T-TS Light Kit alone – always ensure that your stock brake light and turn signals are functioning properly. The LEDV56-T-TS Light Kit is intended to complement your bike's original safety lights for added safety.

Figure 1

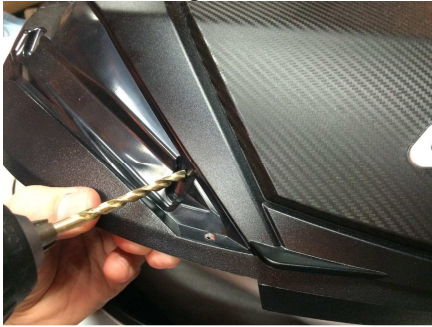


Figure 2



Figure 3

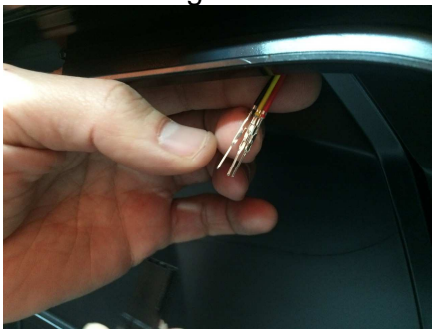


Figure 4



Figure 5

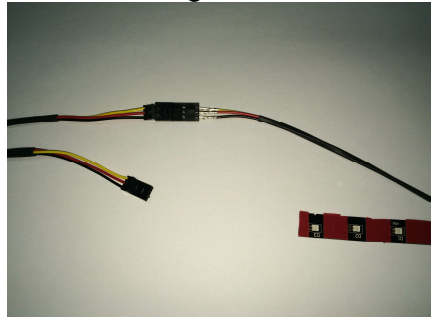


Figure 6



Please note: We make no guarantee that the LEDV56-T-TS Light Kit is legal for street use in your area. You should never rely on your LEDV56-T-TS Light Kit alone – always ensure that your stock brake light and turn signals are functioning properly. The LEDV56-T-TS Light Kit is intended to complement your bike's original safety lights for added safety.

LEDV56-T-TS LIGHT KIT

Installation Instructions

Please read all instructions fully BEFORE beginning installation!

1. The lens housings need to be removed in order to install the LED arrays. Remove the three (3) screws holding each housing in place. Take note of each of the screws as each one is a different size! You will need to remember the location of each screw when reassembling the housing.
2. Remove the lenses and place the LED arrays in the fitted areas under each lens with the wires from each array towards the center of lid opening.
3. Drill small holes (approx. 3/16" or 5mm) in the location near each wire end to accommodate running the wires into the case (Fig. 1).
4. Run each of the LED array wires through each of the drilled holes from outside the case to inside the case. (Fig. 2, 3)
5. Remove the tape backing on each of the LED arrays and press the LED arrays against the bezel housing ensuring the LEDs are centered in each of the LED holes. (Fig. 4) **Note:** Handle the arrays carefully! LEDs do **not** have to fit perfectly! Also, the end of the array may have to slightly "crawl" up the side of the screw boss – this is ok.
6. Take each of the small, black, empty connector housings and mate them to the corresponding connectors on the Top Case Harness.
7. Match wire colors (yellow to yellow, red to red, and black to black) from the LED array & insert all 3 wires at the same time half way into the empty connector housing. (Fig. 5)
8. Press each wire firmly into the housing ensuring that each of the three (3) terminals is secure in each connector housing.
9. Prepare to mount the quick-disconnect connector inside the top case. Determine the most suitable location to mount the connector ensuring that it is easily accessible and does not interfere with the top rack and/or operation of the motorcycle and/or driver/rider mounting or dismounting the motorcycle. Drill a pilot hole and then use the supplied 7/16" (11mm) drill bit to enlarge the hole to the required size.
10. From inside of case, insert male end of connector through hole and secure on outside of case using supplied nut. Ensure connector is tight (hand tighten only). **Do not over tighten or the connector may break!**
11. Proceed to LEDV56-T-TS Light Kit Wiring Instructions before re-assembling lenses to ensure that the light kit is functioning properly. (Fig. 6)
12. Tidy up installation securing all cables. Use the included cable clamps to secure the cable to the inside of your case. Be sure to clean surface with an alcohol wipe prior to affixing the cable clamps to ensure maximum adhesion.

Kit Contents

- 2 x LED bi-color (red/amber) array segments with loose connector housings (2)
- 1 x Power Harness with embedded controller
- 1 x Top Case Harness
- 1 x Installation kit including premium wire-tap connectors (5) and cable clips (6)
- 1 x drill bit (7/16", 11mm)
- These instructions

* The connector can be placed in any number of places on the case. We recommend, mounting the case on your rack to determine exactly where you most prefer to install the connector. Should you make a mistake or change your mind in the future, we can supply complementary plugs to fill a 7/16" drilled hole. Contact us at www.admorelighting.com.

Please note: We make no guarantee that the LEDV56-T-TS Light Kit is legal for street use in your area. You should never rely on your LEDV56-T-TS Light Kit alone – always ensure that your stock brake light and turn signals are functioning properly. The LEDV56-T-TS Light Kit is intended to complement your bike's original safety lights for added safety.



LEDV56-T-TS

Wiring Instructions

Your LEDV56-T-TS light kit has been designed to operate with the tail light, brake light **and turn signal functions** of your bike or scooter. Using the supplied wire tap connectors, look as close to the rear taillight as possible to locate the indicated wires:

5-Wire (CG) Power Harness	Your Motorcycle / Scooter
RED ¹	Tail Light wire
BLUE	Brake Light wire
GREEN	Right Turn Signal wire
YELLOW	Left Turn Signal wire
BLACK	Ground

¹ For CanBus-equipped motorcycles, the Red wire must be connected to a 12V switched source (live when ignition switch is on). Connect the Blue wire to the brake light wire.

Mount case and attach harness from bike or scooter to male connector on case.

Note: Connector locks by inserting and turning.

Finally, test the functioning of the light kit with your motorcycle or scooter's tail light, brake light, and turn signals.

CAUTION: The controller embedded in the main power harness **MUST NOT** be submersed in water. Ensure that the controller is placed in a location that does not fill with water!

Troubleshooting:

1. Ensure that all 4 dip switches are in the "On" position (top position with cables pointing down).
2. Ensure the Red wire is connected to switched +12v
3. Ensure the Black wire is connected to a solid ground
4. If lights still do not illuminate, test the power harness by connecting the Red wire directly to +12v of a battery and the Black wire to solid ground.

Visit www.admorelighting.com for information on other AdMore products, replacement parts and special offers!

Please note: We make no guarantee that the LEDV56-T-TS Light Kit is legal for street use in your area. You should never rely on your LEDV56-T-TS Light Kit alone – always ensure that your stock brake light and turn signals are functioning properly. The LEDV56-T-TS Light Kit is intended to complement your bike's original safety lights for added safety.